

We've got you covered where you live, work, and play.

📍 Street: City: State: Zip: ↻

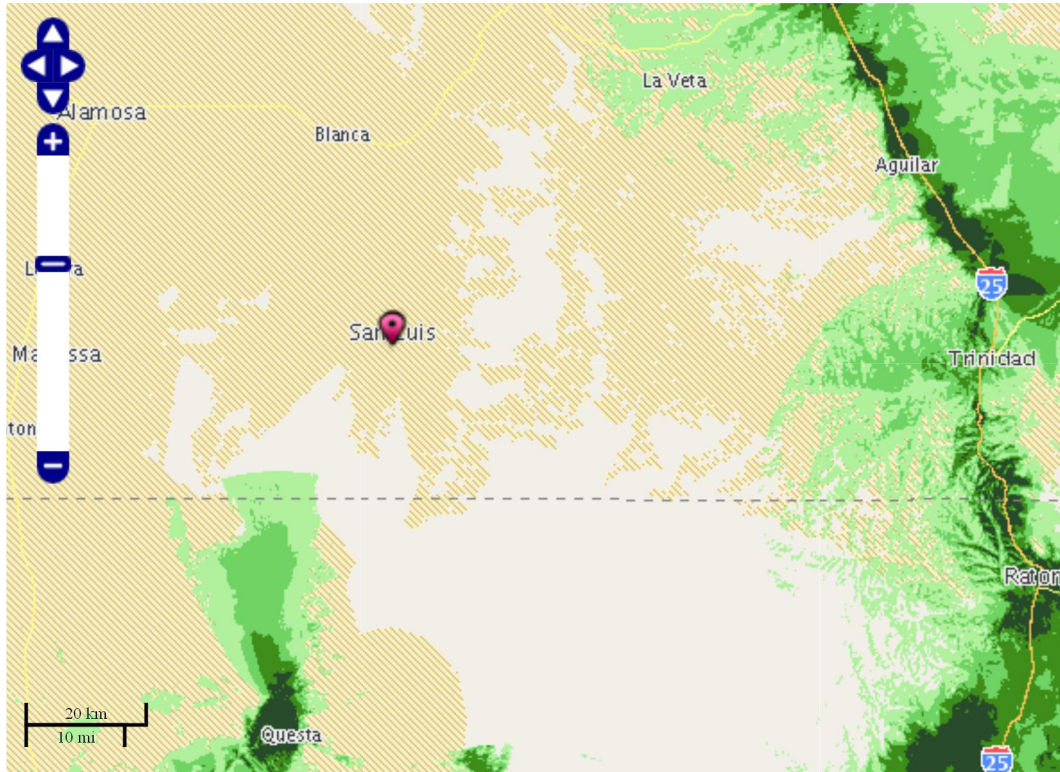
[Prepaid and FlexPay coverage map](#) ▶
[Learn more about T-Mobile's expanded coverage](#) ▶

3G/4G smartphone 2G/voice

2G/voice signal strength* ?

See your voice coverage on T-Mobile's network.

Excellent Very Strong Good Satisfactory Service Partner No Service



📍 Address location 📶 New cell site 📶 T-Mobile HotSpot [Find a T-Mobile HotSpot](#) ▶

*The definitions and user experience may differ for dedicated Mobile Internet devices such as Mobile HotSpots, Tablets, and Laptop Sticks. For more details, see a Retail Associate at the nearest [T-Mobile Retail Store](#).

MAP INFORMATION: Capable device required for network connection and 3G and 4G speeds. Roaming and on-network data allotments may differ. Maps approximate anticipated coverage outdoors, based on a variety of factors, and do not guarantee service availability. [Learn more](#)